

# **A Simple Varactor-Tuned Loop Antenna Matching Network**

by

Chris Trask / N7ZWY  
Sonoran Radio Research  
P.O. Box 25240  
Tempe, AZ 85285-5240

Senior Member IEEE

Email: [christrask@earthlink.net](mailto:christrask@earthlink.net)  
27 August 2008  
Revised 28 August 2008  
Revised 30 August 2008  
Revised 2 September 2008  
Revised 16 September 2008

## Introduction

Loop antennas are of interest to a wide range of users, from shortwave listeners (SWLs) and radio amateurs to designers of direction-finding receiver systems. SWLs and radio amateurs living in confined areas such as apartments or in communities having antenna restrictions find loop antennas and especially active loop antennas to be a practical solution as they can offer directional performance similar to that of a dipole antenna while taking up a considerably smaller space, and their small size makes them readily adaptable to mechanical rotation.

However, the high inductive reactance of the loop antenna impedance is detrimental to wideband performance, and remote tuning is often employed for achieving good performance and enjoying the highly desirable magnetic field response, which provides some degree of immunity from electric field noise from sources such as lightning discharges, faulty mains transformers, and fluorescent lighting.

## Loop Antenna Impedance

Before we address the design of remotely tunable matching networks, we need to gain an understanding and appreciation of the impedance of loop antennas, the nature of which precludes the design of wideband matching networks. It is well known that the loop antenna impedance consists of a small real part  $R_{ant}$  (consisting of the radiation resistance plus bulk and induced losses) in series with a large inductance  $L_{ant}$ , which renders the loop antenna as being a high Q source (1):

$$Q_{ant} = \frac{\omega L_{ant}}{R_{ant}} \quad (1)$$

where  $\omega$  is the frequency in radians per second.

There is more than enough literature available about loop antennas that the basic theory

really does not need to be repeated here, and very thorough treatments are available from King (2), Kraus (3), Terman (4) and Padhi (5). Most authors provide little discussion about the impedance of the loop antenna, other than to demonstrate that the impedance is dominated by a large series inductance and is a cascade of parallel and series resonances (6). A few go further and show that the loop antenna impedance can be seen as a shorted transmission line. Terman (4) makes use of this method, which is usable for frequencies below the first parallel resonance.

An IEEE paper published in 1984 (7), provides a very useful means for estimating the real and imaginary parts of the loop antenna impedance, the latter of which is a refinement of the method proposed by Terman, and which the authors of that paper further refine by providing scalar coefficients for use with a wide variety of geometries that are commonly used in the construction of loop antennas. In their approximation, the radiation resistance is determined by:

$$R_{ant} = a \tan^b \left( \frac{k_0 L}{2} \right) \quad (2)$$

where  $L$  is the perimeter length of the loop antenna and the wave number  $k_0$  is defined as:

$$k_0 = \omega \sqrt{\mu_0 \epsilon_0} \quad (3)$$

where  $\mu_0$  is the permeability of free space ( $4\pi \cdot 10^{-7}$  H/m), and  $\epsilon_0$  is the permittivity of free space ( $8.8542 \cdot 10^{-12}$  F/m). The coefficients  $a$  and  $b$  in Eq. 2 are dependent on the geometry and the perimeter length of the loop antenna, a list of values being provided in Table 1.

The inductive reactance of the loop antenna impedance is determined by:

$$X_{ant} = j Z_0 \tan \left( \frac{k_0 L}{2} \right) \quad (4)$$

where  $Z_0$  is the characteristic impedance of the equivalent parallel wire transmission line, de-

Configuration	$L/\lambda \leq 0.2$		$0.2 \leq L/\lambda \leq 0.5$	
	a	b	a	b
Circular	1.793	3.928	1.722	3.676
Square (side driven)	1.126	3.950	1.073	3.271
Square (corner driven)	1.140	3.958	1.065	3.452
Triangular (side driven)	0.694	3.998	0.755	2.632
Triangular (corner driven)	0.688	3.995	0.667	3.280
Hexagonal	1.588	4.293	1.385	3.525

Table 1 - Coefficients to be Used with Equation 2

defined as:

$$Z_0 = 276 \ln \left( \frac{4A}{Lr} \right) \quad (5)$$

where A is the enclosed area of the loop antenna and r is the radius of the antenna conductor.

A highly detailed report from the Ohio State University Electroscience Laboratory in 1968 (8) provides a thorough analytical means for estimating the real and imaginary parts of the impedance of single and multi-turn loop antennas, as well as the antenna efficiency.

Computer simulation routines such as EZNEC also provide a useful means for estimating the loop antenna impedance. Together with papers and reports such as those mentioned herein, they allow the designer to gain an understanding of the nature of the loop antenna impedance. They are not, however, suitable substitutes for actual measurements and the designer should always rely to measured data, especially when designing matching networks.

Fig. 1 shows the measured terminal impedance of a 1m diameter loop made with 0.25" copper tubing. In order to ensure that the loop antenna is properly balanced, a 1:1 BalUn transformer is used to interface the loop antenna with the impedance bridge. Loop antennas that are fed unbalanced have dramatically different impedance characteristics and radia-

tion patterns from those that are fed balanced (9).

In the process of designing matching networks for adverse impedances such as those of loop antennas, it is very useful to devise lumped element equivalent models as some analysis and optimization routines, such as PSpice, do not have provisions for including tables of measured data for interpolation. Fig. 2 illustrates two rudimentary lumped element models, the first being usable up to and slightly beyond the first parallel resonance and the second being usable to the point prior to where the impedance becomes asymptotic, or about 25% below the first parallel resonance. Far more detailed models can be devised that include subsequent resonances and anti-resonances (10), but they would serve little pur-

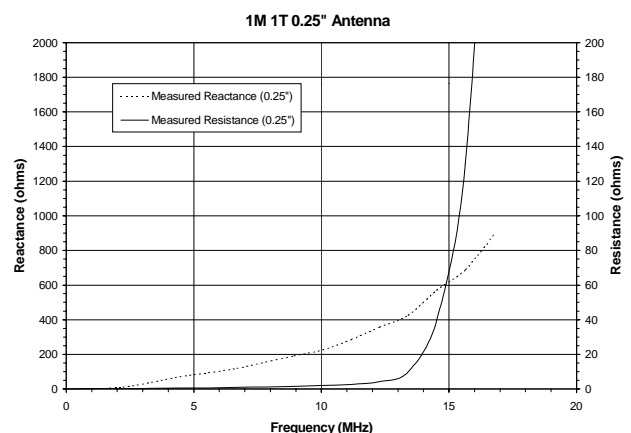


Fig. 1 - Measured Impedance of 1 meter Diameter Loop Antenna made with 0.25" Copper Tubing

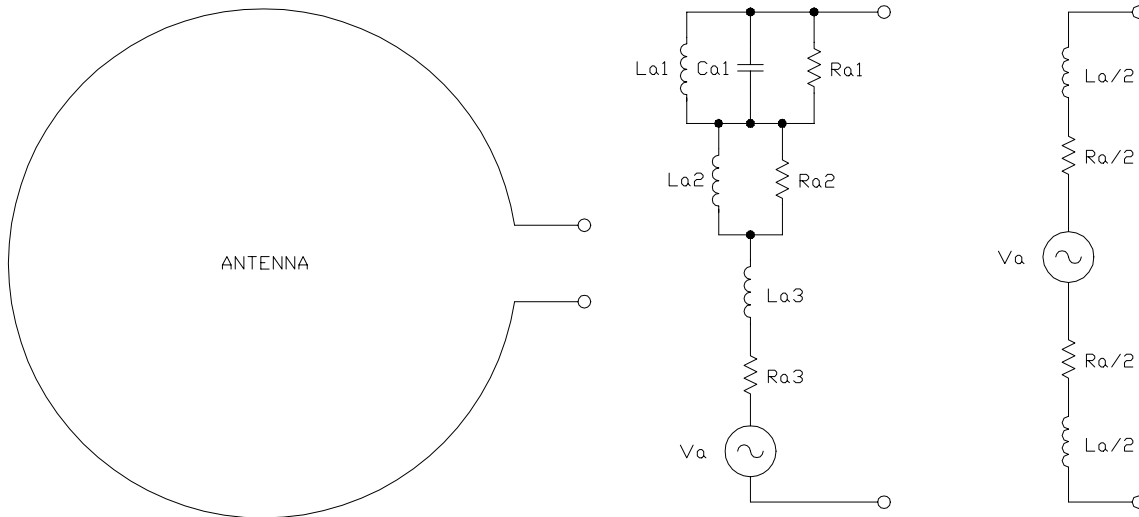


Fig. 2 - The Loop Antenna (left) Together with Detailed (centre) and Simplified (right) Lumped Element Impedance Equivalent Models.

pose here as the application here is focused on frequencies below the first resonance.

In general, I use the more detailed model for PSpice simulations and the simpler one for illustrations such as those to be used here later. For the 1m diameter loop made from 0.25" copper tubing, the element values are roughly:

$R_{a1} = 5k \text{ ohms}$	$L_{a1} = 0.4\mu\text{H}$
$C_{a1} = 300\text{pF}$	
$R_{a2} = 0.6 \text{ ohm}$	$L_{a2} = 0.05\mu\text{H}$
$R_{a3} = 1.0 \text{ ohm}$	$L_{a3} = 2.2\mu\text{H}$

These values were used in the evaluation of a wide variety of passive matching networks suitable for adaptation to remote tuning, the goal being to devise a varactor-tuned matching network that could be coupled directly to a coaxial cable having an impedance of 50-ohms or to a subsequent amplifier stage or stages of comparable impedance.

In the overall scheme, balanced networks a preferred as they allow for the suppression of

common-mode interference signals such as lightning discharges, faulty mains transformers, fluorescent lighting, as well as nearby high-power broadcasting stations.

### Simple Matching Networks

At first glance, the simplified equivalent model in Fig. 2 readily suggests that adding a capacitor in series with each antenna terminal would provide a good match. This approach, illustrated in Fig. 3 provides for superb signal-to-noise performance as the loop antenna can

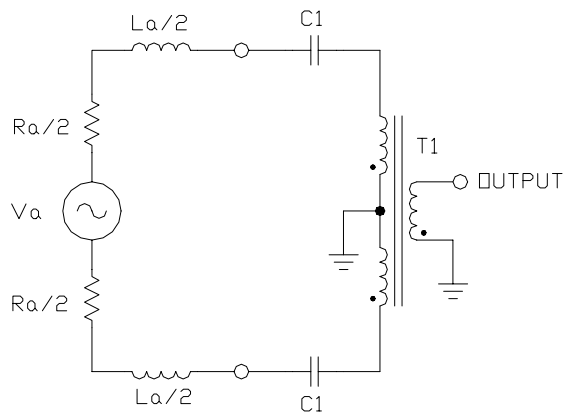


Fig. 3 - Passive Series Tuning

be matched properly to the load (1, 11). In addition, the magnetic field performance of the loop antenna can be thoroughly enjoyed, reducing the effects of noise from electric field sources, though not to the degree as would be experienced with a shielded loop antenna.

Once the reactance portion of the loop antenna impedance is adequately tuned, the impedance of the antenna seen at the output terminal of Fig. 3 becomes a very small resistance, which can be less than an ohm for antennas made with large radius conductors such as 1/2" copper tubing. The design now becomes a matter of devising a series of good quality wideband transformers so as to provide a good match between this low resistance and the characteristic impedance of the feed line, which is usually 50-ohm coaxial cable.

### Matching Network Design

Many designs for matching loop antennas make use of a single transformer between the feed line and the antenna. In such approaches, the coupling coefficient between the primary

and secondary windings is generally poor due to the high turns ratio between the two windings and the low impedance of the tuned loop. In transmitting applications, the lower coupling coefficient results in loss of radiated power and heating of the magnetic materials used in the transformer core. In receiver applications, the lower coupling coefficient and subsequent power loss results in a higher antenna temperature and receiver system noise figure (NF).

Twisted bifilar and trifilar wires typically used in wideband transformers provide high coupling coefficients that approach unity (12, 13, 14). However, the high turns ratio of the primary and secondary windings of the single transformer approach shown in Fig. 3 precludes the use of combining both windings as a single grouping of twisted wires.

Fig. 4 illustrates a matching network that can be realized with wideband transformers made with bifilar and trifilar twisted wires. Here, transformer T1 is a Guanella 4:1 impedance balanced-to-balanced (BalBal) transformer (15, 16, 17) made with two bifilar pairs of twisted

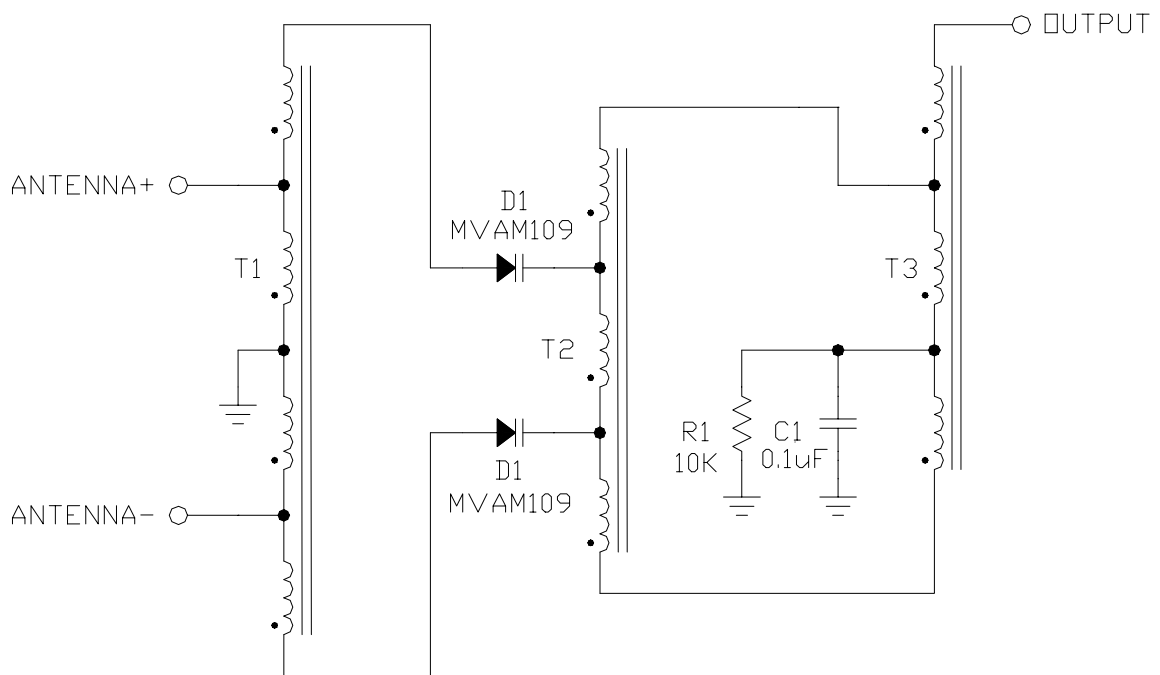


Fig. 4 - Varactor-Tuned Loop Antenna Matching Network Schematic



Fig. 5 - Construction Details for Transformer T1

wire on a single core of magnetic material. Under most circumstances, such a transformer would be constructed on a ferrite core such as a Fair-Rite 2843002402 binocular core, however the low impedances at this point in the circuit requires that an alternate form of construction be used. Shown in Fig. 5, transformer T1 is constructed as two windings of twelve turns each of #30 AWG bifilar wire on a Micrometals T44-6 powdered iron core.

Parallel wires could be used in the construction of transformer T1, however there is little difference in the performance between the two methods (18). In general, twisted wires will provide a better coupling coefficient for small gauge wires such as are used here and are very convenient when constructing wideband transformers for small-signal applications (18, 19, 20). Parallel wires are a far better option

for applications where larger gauge wire is called for in higher power applications (18).

Using a 4:1 impedance transformer at the input stage of the network provides a somewhat better operating point for the MVAM109 varactors D1 and D2 that are used here for the remote tuning. Used at this point, the equivalent series resistance of the varactors results in little signal loss and they can provide almost two octaves of tuning range with loop antenna elements made with 1/4" copper tubing.

Transformers T2 and T3 are both constructed with four turns of #30 AWG trifilar wire through the holes of a Fair-Rite 2843002402 binocular core. Fig. 6 and Fig. 7, respectively, illustrate how the wires are grouped together for the various connections.

The matching network shown in Fig. 4 is not the only form that may be used for matching loop antennas in this manner. The input transformer T1 provides a good first stage for interfacing with the tuning varactors D1 and D2, and the output BalUn transformer T3 is mandatory for converting the balanced tuning and matching network to the unbalanced coaxial cable. The interstage transformer T2 may be any combination of 1:4 and 1:9 impedance transformers that provides the impedance ratio needed to attain a good wideband match, and the combination will depend very much on the size of the antenna conductor used. For instance, if 1/2" copper tubing is to be used for the antenna, then the single 1:9 transformer shown for T2 in Fig. 4 would be better if replaced with a pair of

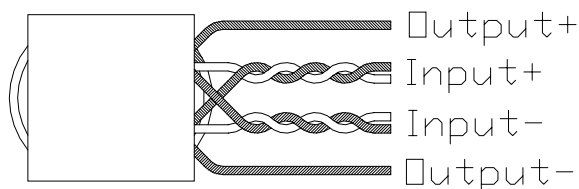


Fig. 6 - Construction Details for Transformer T2

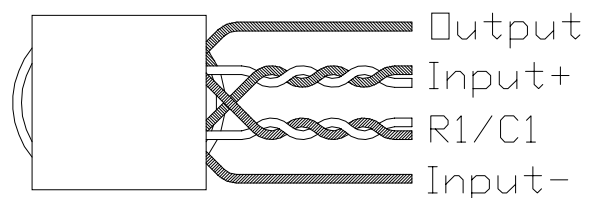


Fig. 7 - Construction Details for Transformer T3

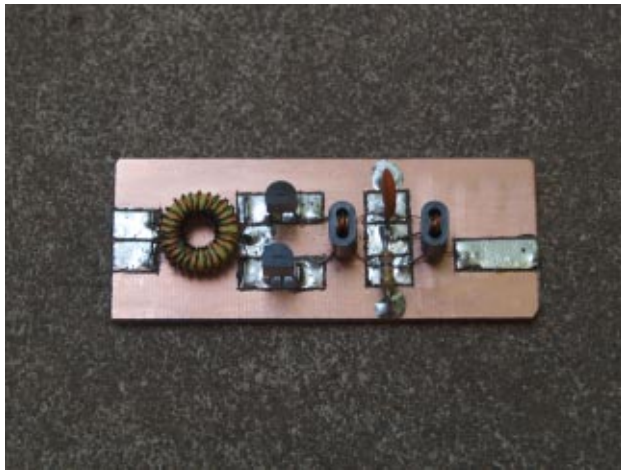


Fig. 8 - Prototype Circuit Assembly

1:4 transformers.

A prototype for this circuit was constructed on a 1.0" by 2.5" piece of 1/16" thick PC board material and is shown in Fig. 8. Pads were cut out using a Dremel tool, and the pads were kept large so as to better withstand the stresses that result from repeated soldering during experimentation.

### Masthead Construction Details

The mechanical construction of the weatherproof masthead assembly for the tuning network and for mounting the loop antenna element requires nothing more than PVC plumbing components and other commonly available hardware items. A desirable feature of this design was to make it such that a variety of antenna elements could be used which would allow for experimentation as well as using antenna elements that are optimized for specific frequency bands.

Using a method suggested by Roberto Craighero (21), the familiar SO-239 UHF connector is used on the masthead for attaching the antenna elements. These are mounted on 1 1/4" PVC pipe plugs. As shown in Fig. 9, the plugs are machined by boring a 5/8" diameter hole in the centre and then a constellation of



Fig. 9 - Machining Details for PVC End Plugs

four 9/32" holes to match those of the SO-239 flange. The mounting holes on the flange should also be drilled to this diameter so as to accept 6-32 mounting hardware.

To provide the electrical connection between the SO-239 connectors and the circuit assembly, a "spider" consisting of four #6 solder lugs is assembled with the aid of an SO-239 connector, four 1/4" spacers, and four sets of 1/2" long 6-32 machine screws and nuts. Arranged as shown in Fig. 10, the four solder lugs are attached to a 6" piece of finely stranded #12 AWG wire, passing the wire through one hole of each solder lug and then firmly soldered.

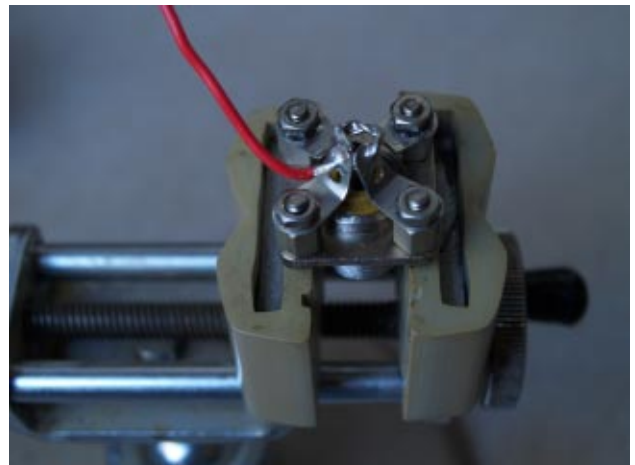


Fig. 10 - Assembling the Connector "Spider"



Fig. 11 - Masthead Tee Subassembly

The connectors and spiders are then mounted to the PVC end caps, using 1/2" long 6-32 machine screws and nuts, and a layer of silicone sealant should be applied under the connector flange to provide a weatherproof seal. These end cap assemblies are then cemented to the ends of a 1 1/4" PVC tee, as shown in Fig. 11. If a large antenna element is to be used that will require a supporting mast, then the tee can be replaced with a 1 1/4" PVC cross, with the loop support mast added to the top opening.

The bottom end of the weatherproof housing consists of a 1 1/4" PVC slip to pipe thread adaptor, a flanged BNC connector, a 3/8" flat

washer, a keeper made from 1" PVC pipe, and a few hardware items. As shown in Fig. 12, the BNC connector is mounted to the 3/8" flat washer by first drilling holes in the washer to match those of the BNC connector flange. Next, 4-40 hardware including one solder lug is used to mount the connector to the washer, after which a pair of 1" long wires are added to the connector centre conductor and the solder lug.

The keeper is made from a short piece of 1" PVC pipe and has a series of four slots filed at one end that will pass over the heads of the screws holding the BNC connector to the washer. The length of the keeper should be such that it becomes flush with the end of the PVC pipe adapter. The connector assembly is placed in the PVC pipe adapter, then the keeper is cemented over the connector assembly, holding it in place.

The masthead assembly is completed with a 4-inch long section of 1 1/4" PVC pipe. The wires from the masthead base assembly of Fig. 12 are soldered to the circuit assembly of Fig. 8, then the 4-inch section of pipe is slipped over the circuit assembly and cemented to the masthead base assembly. Finally, the wires from the masthead tee assembly of Fig. 11 are soldered to the circuit assembly, and the two PVC assemblies are cemented together, resulting in the completion of the masthead



Fig. 12 - Masthead Base Subassembly



Fig. 13 - Completed Masthead Assembly





Fig. 14 - PL-259 Reducers Attached to 1/4" (left) and 1/2" (right) Copper Tubing

assembly as shown in Fig. 13.

### Antenna Element Assembly

The antenna elements are made from either 1/4" or 1/2" flexible copper tubing. A pair of PL-259 UHF connectors with reducers are used to attach the antenna elements to the masthead assembly, providing a very convenient means for changing the antenna element for experimentation and optimization.

The PL-259 reducer, which is made for the purpose of using the smaller diameter RG-58 and RG-59 cable with the PL-259 connec-



Fig. 15 - A Variety of Antenna Elements

tor, is a very fortunate item for this design. First, the inside diameter is slightly more than 1/4", which allows for easily sweat soldering them to 1/4" copper tubing. And the outside diameter of the boss at the one end is such that it will fit very snugly inside 1/2" copper tubing, though some slight amount of effort may be required and some small holes should be drilled at the end of the tubing to allow for more secure soldering. After the reducers are attached to the copper tubing, the PL-259 is simply screwed on to complete the assembly. Fig. 14 shows the reducer as attached to both 1/4" and 1/2" copper tubing, and Fig. 15 shows a variety of antenna elements made in this manner.

### Tuning Control Assembly

The matching network tuning voltage is sent up the coaxial cable, and the source need not be more complicated than a variable power supply and a simple bias tee, such as the one depicted in the schematic of Fig. 16. Here, the transformer T1 is made with 6 turns #26 AWG bifilar wire on a Fair-Rite 2843000102 or similar balun core. As shown in Fig. 17, this bias tee fits comfortably inside a 3.25x2.13x1.13" aluminum enclosure and is very convenient for other applications such as powering mast-mounted preamplifiers.

A slightly more complicated but self-contained tuning controller is shown in Fig. 18. Here, the transformer T1 is the same as used in the bias tee of Fig. 16, and the potentiometer

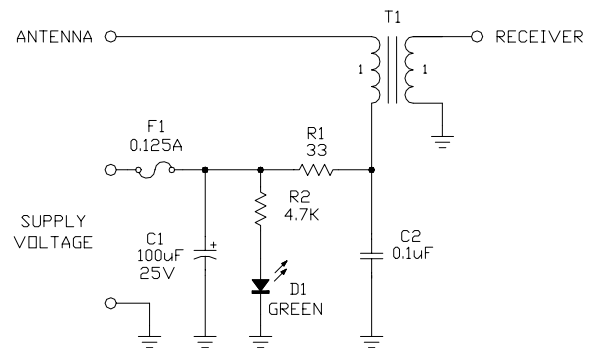


Fig. 16 - Biasing Tee Schematic (see text)

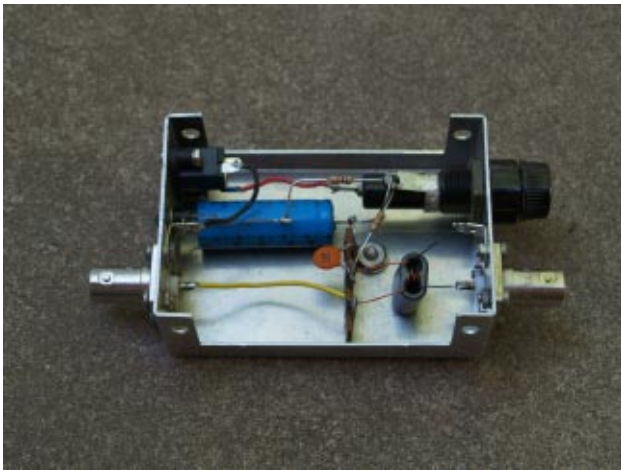


Fig. 16 -Bias Tee Assembly

R3 is of the 10-turn variety, or it can be a single-turn unit with a reduction drive. Power is supplied by way of a 24VDC wall transformer or any other suitable means, and the controller can be built within a 4.25x2.25x1.5" aluminum enclosure. If a single-turn potentiometer is used for R3 in conjunction with a 2-speed reduction drive, then a tuning scale can be added to the enclosure, which is very convenient.

### Prototype Evaluation

A prototype of the matching network of Fig. 4 was constructed and evaluated with a 1m and a 64cm diameter loop element, each made with 1/4" copper tubing. Surprisingly, there was virtually no harmonic interference from nearby AM BCB stations, which may very

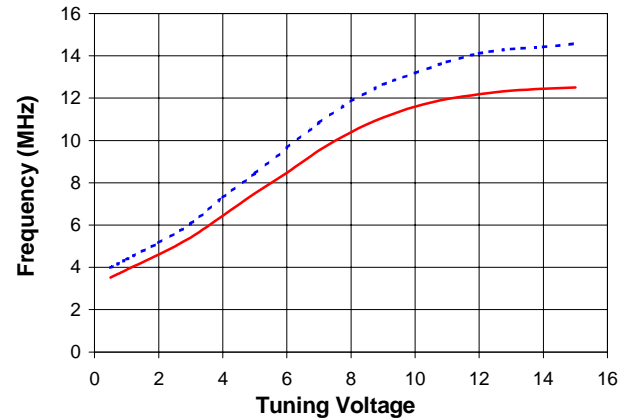


Fig. 18 -Tuning Characteristics of 64cm (dashed line) and 1m (solid line) Diameter Antennas made with 1/4" Copper Tubing

likely be a benefit of the balanced nature of the tuning. The chart of Fig. 18 describes the tuning range of the two antenna elements used in the evaluation.

With the 1m diameter element, the 3dB bandwidth was a fairly constant 200kHz over the entire tuning range. The S/N ratio is very good, owing in no small part to the passive nature of the network and the voltage gain that accompanies the impedance matching between the very low loop impedance and the 50-ohm coaxial cable impedance.

### Closing Remarks

There are many benefits to be realized in

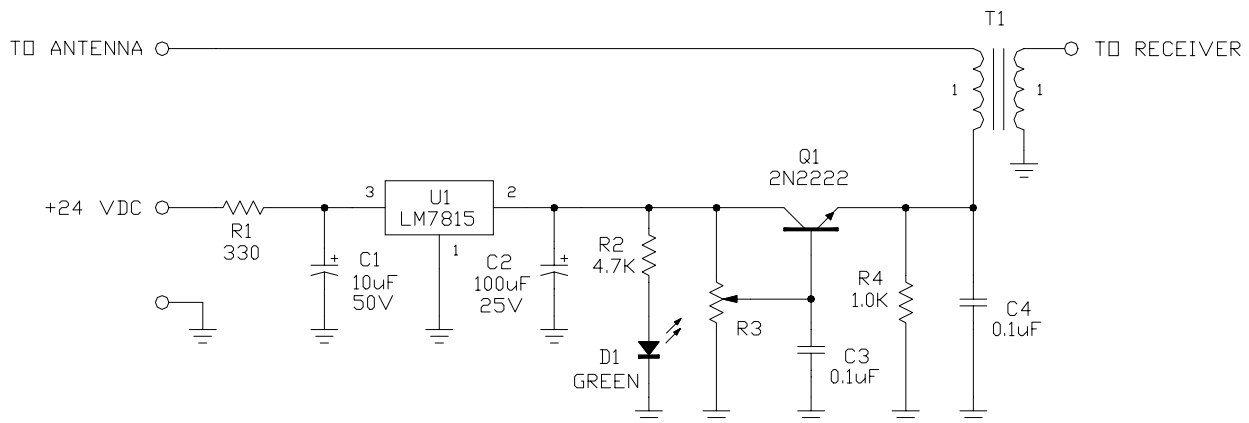


Fig. 17 - Control Unit Schematic (see text)

applying simple impedance matching and remote tuning techniques to loop antennas. The design described herein has a generous tuning range of almost two octaves together with a very good S/N due to the impedance matching which precludes the need for amplification. The mechanical design uses readily available hardware items and allows for interchanging the antenna elements as may be desired for optimizing performance for specific bands of interest.

## References

1. Pan, S.-G., T. Becks, D. Heberling, P. Nevermann, H. Rösman, and I. Wolff, "Design of Loop Antennas and Matching Networks for Low-Noise RF Receivers: Analytical Formula Approach," *IEE Proceedings on Microwaves, Antennas, and Propagation*, Vol. 144, No. 4, August 1997, pp. 274-280.
2. King, R.W.P. and C.W. Harrison, *Antennas and Waves: A Modern Approach*, MIT Press, 1969.
3. Kraus, J.D., *Antennas, 2nd ed.*, McGraw-Hill, 1988.
4. Terman, F.E., *Electronic and Radio Engineering, 4th ed.*, McGraw-Hill, 1955.
5. Padhi, Trilochan, "Theory of Coil Antennas," *Journal of Research of the National Bureau of Standards*, Jul 1965, pp. 997-1001.
6. Storer, James E., "Impedance of Thin-Wire Loop Antennas," *AIEE Transactions*, Part 1, November 1956, pp. 606-619.
7. Awadalla, K.H. and A.A. Sharshar, "A Simple Method to Determine the Impedance of a Loop Antenna," *IEEE Transactions on Antennas and Propagation*, Vol. AP-32, No. 11, Nov 1984, pp. 1248-1251.
8. Flaig, T.L., "The Impedance and Efficiency of Multiturn Loop Antennas," Technical Report 2235-3, The Ohio State University Electroscience Laboratory, 3 April 1968.
9. Trask, C., "Active Loop Aerials for HF Reception, Part 1: Practical Loop Aerial Design," *QEX*, July/August 2003, pp. 35-42.
10. Streable, G.W. and L.W. Pearson, "A Numerical Study on Realizable Broad-Band and Equivalent Admittances for Dipole and Loop Antennas," *IEEE Transactions on Antennas and Propagation*, Vol. 29, No. 5, September 1981, pp. 707-717.
11. Trask, C., "Active Loop Aerials for HF Reception, Part 2: High Dynamic Range Aerial Amplifier Design," *QEX*, Sep/Oct 2003, pp. 44-49.
12. Walker, John L.B., Daniel P. Meyer, Frederick H. Raab, and Chris Trask, *Classic Works in RF Engineering: Combiners, Couplers, Transformers, and Magnetic Amplifiers*, Artech House, 2006.
13. Trask, C., "Wideband Transformers: An Intuitive Approach to Models, Characterization and Design," *Applied Microwave & Wireless*, Vol. 13, No. 11, November 2001, pp. 30-41.
14. Trask, C., "Designing Wide-band Transformers for HF and VHF Power Amplifiers," *QEX*, May/April 2005, pp. 3-15.
15. Guanella, G., "New Method of Impedance Matching in Radio-Frequency Circuits," *The Brown Boveri Review*, September 1944, pp. 327-329.
16. Guanella, G., "High-Frequency Matching Transformer," US Patent 2,470,307, 17 May 1949.
17. Guanella, G., "High Frequency Balancing Units," US Patent 3,025,480, 13 March 1962.
18. Sevick, J., *Transmission Line Transformers, 4th ed.*, Noble, 2001.
19. Ruthroff, C.L., "Some Broad-Band Transformers," *Proceedings of the IRE*, August 1959, pp. 1337-1342.
20. Lefferson, P., "Twisted Magnet Wire Transmission Line," *IEEE Transactions on Parts, Hybrids, and Packaging*, Vol. PHP-7, No. 4, Dec 1971, pp. 148-154.
21. Craighero, R., "More on Short Loop Antennas, Part 2" *Radio Communication*, April 1992, pp. 30-31.

## Part Resources

Most of the parts used in the matching network (Fig. 4), as well as one or two in the bias tee (Fig. 16) and control unit (Fig. 18) are not widely available from commercial distributors. Items such as toroid and balun cores, as well as the MVAM109 varactors, are available from specialty parts dealers and various hobby outlets. Fortunately, all such parts used in the design are available from Dan's Small Parts (<http://www.danssmallpartsandkits.net>), allowing for a few substitutions, and can be conveniently obtained in a single purchase. Those items are as follows:

Item	Source	Part Number or Description
MVAM109 Varactor	Dan's Small Parts	MVAM109 Varactor
	eBay	
T44-6	Amidon	
substitute T50-6	Dan's Small Parts	T50-6
Fair-Rite 2843002402 Balun Core	Dan's Small Parts	BLN43-2402 2 Hole Balun Core
#34 AWG magnet wire	various	
substitute #32 AWG	Dan's Small Parts	No. 32 25 Feet
substitute #36 AWG	Dan's Small Parts	No. 36 25 Feet
Fair-Rite 2843000102 Balun Core		
substitute 2843000202	Dan's Small Parts	BLN43-202 2 Hole Balun Core
#26 AWG magnet wire	Dan's Small Parts	No. 26 25 Feet
7:1 Reduction Drive	Dan's Small Parts	J.B. 7:1 Reduction Drive
2-Speed Reduction Drive	Dan's Small Parts	J.B. 2-Speed Reduction Drive